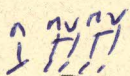


# Iris - Goo Goo Dolls

Intro:



D Em G

And I'd give up forever to touch you

Bm A G

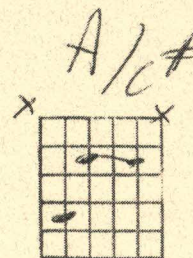
'Cause I know that you feel me somehow

D Em G

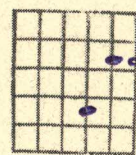
You're the closest to heaven that I'll ever be

Bm A G

And I don't want to go home right now



B5sus2



D Em G

And all I can taste is this moment

Bm A G

And all I can breathe is your life

D Em G

And sooner or later it's over

Bm A G

I just don't want to miss you tonight

Bm A G

And I don't want the world to see me

Bm A G

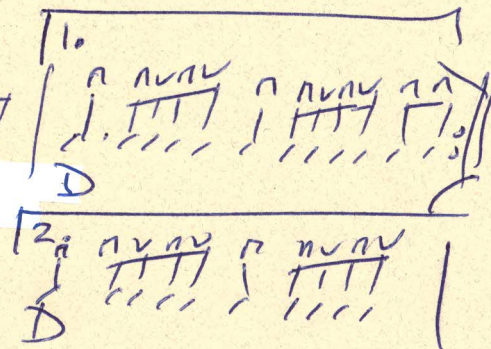
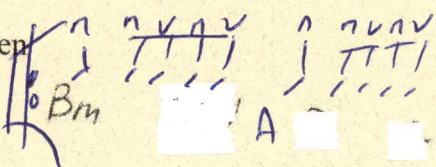
'Cause I don't think that they'd understand

Bm A G

When everything's made to be broken

Bm A G

I just want you to know who I am



D Em G

And you can't fight the tears that ain't coming

Bm A G

Or the moment of truth in your lies

D Em G

When everything feels like the movies

Bm A G

Yeah, you bleed just to know you're alive



# CHORUS:

Bm A G 7/8  
 And I don't want the world to see me  
 Bm A G 2/4  
 'Cause I don't think that they'd understand  
 Bm A G 2/4  
 When everything's made to be broken  
 Bm A G 2/4  
 I just want you to know who I am

Bm | A/C# | D | 1/2 |  
 Bm | A/C# | G | 1/2 |  
 Bm | A/C# | G G/F# | G | 1/4 | 1/4 | 1/4 | 1/4 | 3X | Bm | A/C# | G G/F# |  
 G | 1/4 | 1/4 | G/F# | 1/4 | 1/4 | G | 1/4 | 1/4 | Bm | 1/4 | 1/4 | G | 1/4 | 1/4 | G/F# | 1/4 | 1/4 | Bm | 1/4 | 1/4 | Bm | 1/4 | 1/4 |  
 Bm | A/C# | D | 1/2 | Bm | A/C# | G | 1/2 |

Bm A G 7/8  
 And I don't want the world to see me  
 Bm A G 2/4  
 'Cause I don't think that they'd understand  
 Bm A G 2/4  
 When everything's made to be broken  
 Bm A G 1/2  
 I just want you to know who I am

Bm A G 1.2. 1/2  
 I just want you to know who I am

Outro Bm | A/C# | D | 1/2 | Bm | A/C# | G | 1/2 |