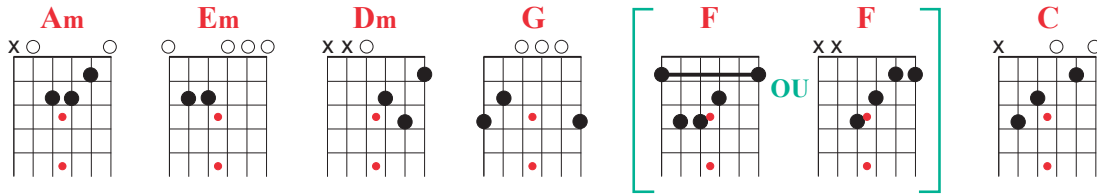
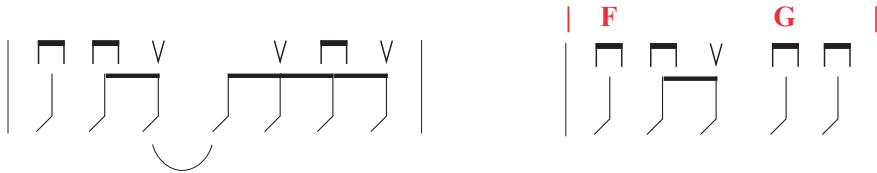


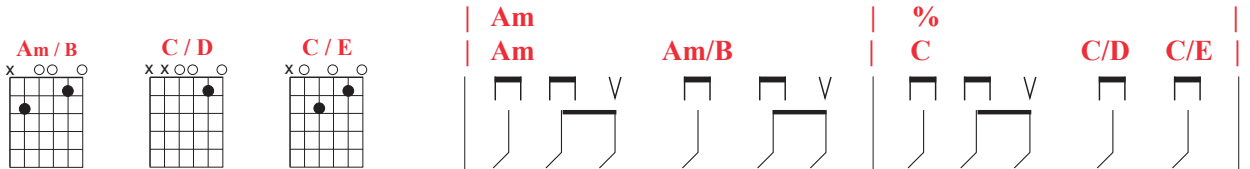
# LOSING MY RELIGION (R.E.M.)



Album: Out Of Time (1991)



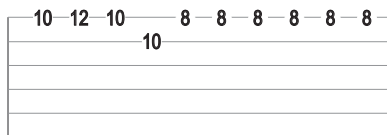
NOTE: ON PEUT REMPLACER | Am | % | DANS L'INTRO ET LE REFRAIN PAR:



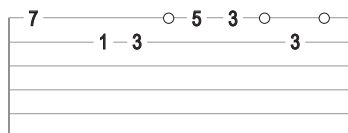
AVEC 2 GUITARES,  
L'UN JOUE LES ACCORDS, L'AUTRE JOUE LES NOTES  
DANS INTRO, INTERLUDE ET OUTRO

INTRO 3 fois

| F | F G | Am | % |



SUITE INTRO 1 fois



Oh, <sup>Am</sup> life <sup>%</sup> is bigger <sup>Em</sup> It's bigger <sup>%</sup> than you  
 And you are not me <sup>Am</sup> The lengths that I will go to <sup>Em</sup>  
<sup>%</sup> The distance in your eyes <sup>Am</sup> <sup>%</sup>  
<sup>Em</sup> Oh no, I've said <sup>%</sup> <sup>Dm</sup> too much <sup>%</sup>  
<sup>G</sup> I set it up <sup>%</sup>

That's me in the corner <sup>Am</sup> <sup>%</sup> That's me in the spotlight <sup>Em</sup>  
<sup>%</sup> <sup>Am</sup> <sup>%</sup> <sup>Em</sup> <sup>%</sup>  
 Losing my religion <sup>Am</sup> <sup>%</sup> Trying to keep up with you  
 And I don't know if I can do it  
<sup>Em</sup> Oh no, I've said too much <sup>%</sup> <sup>Dm</sup> I haven't said enough <sup>%</sup> <sup>G</sup>

REFRAIN

**G** **F**  
 I thought that I heard you laughing  
 | **F** **G** | **Am** %  
 I thought that I heard you sing  
**F** | **F** **G** | **Am** **G**  
 I think I thought I saw you try

**Am** % **Em**  
 Every whisper Of every waking hour I'm  
 % **Am** %  
 Choosing my confessions  
**Em** %  
 Trying to keep an eye on you  
**Am** %  
 Like a hurt lost and blinded fool, fool  
**Em** % **Dm** % **G** %  
 Oh no, I've said too much I set it up

**Am** % **Em** %  
 Consider this, Consider this The hint of the century  
**Am** % **Em**  
 Consider this The slip that brought me  
 % **Am** %  
 To my knees failed what if all these fantasies  
**Em** %  
 Come flailing around  
**Dm** % **G**  
 Now I've said too much

REFRAIN

**G** **F**  
 I thought that I heard you laughing  
 | **F** **G** | **Am** %  
 I thought that I heard you sing  
**F** | **F** **G** | **Am** **G**  
 I think I thought I saw you try

INTERLUDE

| **Am** | **G** |  
 | **F** | **G** |  
 12-12-12-10-10-10-10-8-8-8-5-5-5-5-5 4 FOIS

SUITE INTERLUDE

**C** **Dm** **C** **Dm**  
 But that was just a dream That was just a dream  
 □ □ □ □  
 ) ) ) )

**Am** % **Em**  
 That's me in the corner That's me in the spotlight  
 % **Am** % **Em** %  
 Losing my religion Trying to keep up with you  
**Am** %  
 And I don't know if I can do it  
**Em** % **Dm**  
 Oh no, I've said too much  
 % **G**  
 I haven't said enough

REFRAIN

**G** **F**  
 I thought that I heard you laughing  
 | **F** **G** | **Am** %  
 I thought that I heard you sing  
**F** | **F** **G** | **Am** %  
 I think I thought I saw you try

REFRAIN

**F** | **F** **G** | **Am** %  
 But that was just a dream Try, cry, why try?  
**F** | **F** **G** | **Am** **G**  
 That was just a dream Just a dream, just a dream

OUTRO

**Am**  
 12-12-12-12-12-12-12-12 7 FOIS  
 □  
 □  
 □  
 □  
 12-10-10-13-10-13-10-10  
 □  
 □  
 □

LOSING MY RELIGION (R.E.M.)