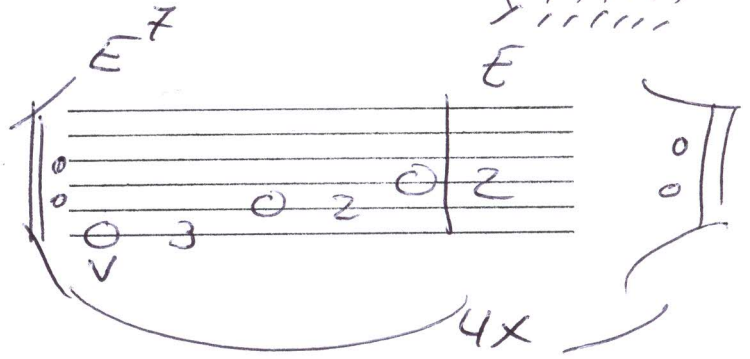


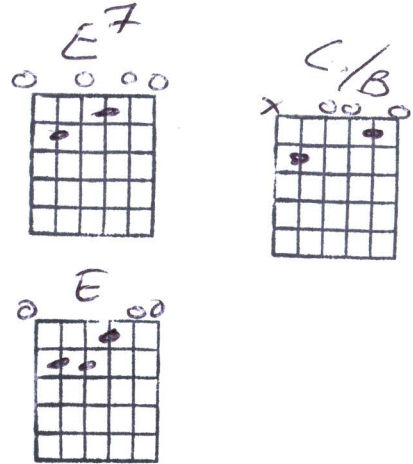
Mrs. Robinson - Simon & Garfunkel

A A V A V A V
 T T T T T
 T T T T T

E⁷ E E⁷ E 1/2
 Di di di di di di di di di di
 A⁷ 1/2 1/2 1/2
 Doo doo doo doo doo doo doo doo
 D⁷ (G | C C/B | Am 1/2 | E⁷ | 1/2 |)
 Di di di di di di di di di di di



(Chorus 1)
 D 1/2 G Em
 And heres to you mrs robinson
 G Em C 1/2 D 1/2
 Jesus loves you more than you will know (wo wo wo)
 G Em
 God bless you please mrs robinson
 G Em C 1/2
 Heaven holds a place for those who pray
 Am 1/2 E⁷ E E⁷ E
 (hey hey hey...hey hey hey)



(Verse 1)
 (E | 1/2 | 1/2 | 1/2 | 1/2 | 1/2 |)
 We'd like to know a little bit about you for our files
 (A⁷ | 1/2 | 1/2 | 1/2 |)
 We'd like to help you learn to help yourself
 D (G | C C/B | Am | 1/2 |)
 Look around you, all you see are sympathetic eyes
 (E⁷ | 1/2 | D | 1/2 |)
 Stroll around the grounds until you feel at home

(chorus)
 G Em
 And heres to you mrs robinson
 G Em C 1/2 D 1/2
 Jesus loves you more than you will know (wo wo wo)
 G Em
 God bless you please mrs robinson
 G Em C 1/2
 Heaven holds a place for those who pray
 Am 1/2 E⁷ E E⁷ E
 (hey hey hey...hey hey hey)

(verse)

E7 1/2 1/2 1/2 1/2
Hide it in a hiding place where no one ever goes

A7 1/2 1/2 1/2
Put it in your pantry with your cupcakes

D | G | C C/B | Am | 1/2 |

Its a little secret jsut the robinson's affair

E | 1/2 | D | 1/2 |

Most of all, you've got to hide it from the kids

(chorus)

G Em

Coo coo ca-choo, mrs robinson

G Em C 1/2 D 1/2

Jesus loves you more than you will know (wo wo wo)

G Em

God bless you please mrs robinson

G Em C 1/2

Heaven holds a place for those who pray

Am 1/2 E7 E E7 E

(hey hey hey...hey hey hey)

(verse)

E7 1/2 1/2 1/2 1/2
Sitting on a sofa on a sunday afternoon

A7 1/2 1/2 1/2
Going to the candidates debate

D | G

Laugh about it, shout about it

C C/B | Am | 1/2 |

When you've got to choose

E7 | 1/2 | D | 1/2 |

Ev'ry way you look at it, you lose

(chorus)

G Em

Where have you gone joe dimaggio?

G Em C 1/2 D 1/2

A nation turns its lonely eyes to you(woo woo woo)

G Em

Whats that you say mrs robinson?

G Em C 1/2

Joltin joe has left and gone away

Am 1/2 E7 E (E7 | E - :)

(hey hey hey...hey hey hey)