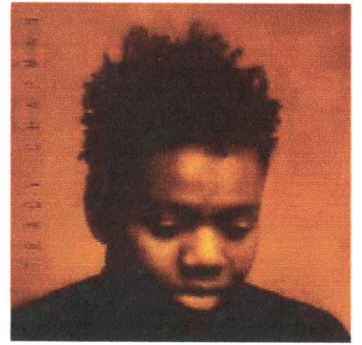
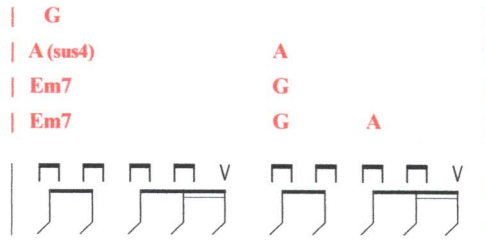
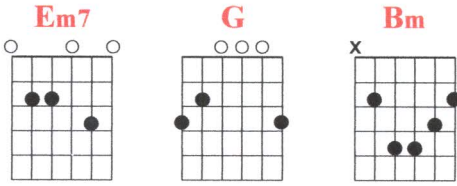
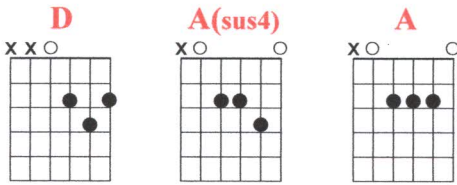


# BABY CAN I HOLD YOU (Tracy Chapman)



Album: Tracy Chapman (1988)



**INTRO:** | D | A(sus4) A | D | A(sus4) A |



D | A(sus4) A | Em7

Sorry, is all that you can't say

| A(sus4) A | D

Years gone by and still

| A(sus4) A | Em7

Words don't come easilly

$\frac{2}{4}$ G  $\frac{4}{4}$ A | A(sus4) A |

Like sorry, like sorry



D | A(sus4) A | Em7

Forgive me, is all that you can't say

| A(sus4) A | D

Years gone by and still

| A(sus4) A | Em7

Words don't come easilly

$\frac{2}{4}$ G  $\frac{4}{4}$ A | A(sus4) A |

Like forgive me, forgive me

D  
But you can say baby

| Em7 G | D

Baby can I hold you tonight

| Em7 G | Bm

Maybe if I told you the right words

A  
At the right time

D | Em7 G A |

You'd be mine



D | A(sus4) A | Em7

I love you, is all that you can't say

| A(sus4) A | D

Years gone by and still

| A(sus4) A | Em7

Words don't come easilly

$\frac{2}{4}$ G  $\frac{4}{4}$ A | A(sus4) A |

Like I love you, I love you

D  
But you can say baby

| Em7 G | D

Baby can I hold you tonight

| Em7 G | Bm

Maybe if I told you the right words

A  
At the right time

D  
You'd be mine

| Em7 G | D

Baby can I hold you tonight

| Em7 G | Bm

Maybe if I told you the right words

A D | Em7 G A |

At the right time, you'd be mine



D | Em7 G A |

You'd be mine

D | Em7 G A |

You'd be mine

