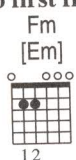


"BOULEVARD OF BROKEN DREAMS" Green Day

As heard on **American Idiot** (REPRISE)

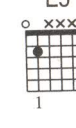
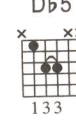
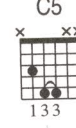
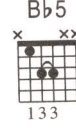
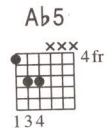
Words by **Billie Joe Armstrong** • Music by **Green Day** • Transcribed by **Jeff Perrin**

chord shapes for Gtr. 3 (acous., capo first fret)



All chord shapes and tablature positions for Gtr. 3 are relative to the capo. Chord names in brackets indicate capo-ed chords.

chord shapes for Gtrs. 1 and 2 (elec., no capo)



A Intro (0:00, 1:15)

Moderately Slow ♩ = 82

(2nd time) Ah

ah

ah

ah

ah

ah

ah

F5

[Em]

Ab5

[G]

Eb5

[D]

Bb5VI

[A]

F5

[Em]

Ab5

[G]

Eb5

[D]

Bb5VI

[A]

Gtr. 3 plays Rhy. Fig. 2 simile second time (see meas. 5)

Gtr. 1 (elec., w/dist. and tremolo effect)*

Rhy. Fig. 1

end Rhy. Fig. 1

1

TAB 4/4

* see Performance Notes

** repeat previous chord

Gtr. 2 (elec. w/dist.) (played first time only)

Bass plays Bass Fig. 1 twice on repeat (see meas. 7)

B 1st and 2nd Verses (0:11, 1:26)

1. I walk a lonely down the road line the and only that divides one that I have ever known
2. I'm walkin' Ab5 the line and that divides one that I have ever known
[Em] [G5] [D]

Gtr. 1 plays Rhy. Fig. 1 three times simile (see meas. 1)

Gtr. 3 (acous.; capo first fret)

Rhy. Fig. 2

5

mind Don't know where it goes but it's home to and where I walk alone
F5 On the border line of the edge me where I walk alone
[Em] [G5] [D] [A]

7 (repeat previous two measures)

Bass Fig. 1

end Rhy. Fig. 2

end Bass Fig. 1

"BOULEVARD OF BROKEN DREAMS"

I walk this empty street on the Boulevard of Broken Dreams
Read between the lines what's fucked up and everything's alright

F5 Ab5 Eb5 Bb5 F5 Ab5 Eb5 Bb5
[Em] [G] [D] [A] [Em] [G] [D] [A]

Gtr. 3 plays Rhy. Fig. 2 twice (see meas. 5)

* Gtrs. 4 and 5 (elec., w/clean tone)

9 Riff A

end Riff A

* Gtr. 4 plays higher notes; Gtr. 5 plays lower notes.

Bass plays Bass Fig. 1 four times (see meas. 7)

when the city sleeps and I'm the only one and I walk alone
Check my vital signs and know I'm still alive and I walk alone

F5 Ab5 Eb5 Bb5 F5 Ab5 Eb5 Bb5
[Em] [G] [D] [A] [Em] [G] [D] [A]

C Chorus (0:52, 2:06, 3:18)

I walk alone and I walk a } My shadow's only one that walks beside me
I walk alone I walk a }

F5 Ab5 Eb5 Bb5 C5 Db5 Ab5 Eb5 F5 Db5
[Em] [G] [D] [A]

Gtr. 3 plays Rhy. Fig. 2 (first two meas. only) (see meas. 5)

Gtrs. 4 and 5 play Riff A (see meas. 9)

Rhy. Fig. 3

17 Gtr. 1

* Gtrs. 1 and 2 (tremolo effect off)

* composite arrangement

end Bass Fig. 2 Bass Fig. 3

My shallow heart's the only thing that's beating Sometimes I wish

Ab5 Eb5 F5 Db5 Ab5 Eb5

Gtrs. 4 and 5 play Riff B third time (see meas. 31)

21

end Rhy. Fig. 3

end Bass Fig. 3

(1st time) go back to A

(2nd time) proceed to D

24

someone up there will find me 'til then I walk alone

F5 Db5 Ab5 C5 C

"BOULEVARD OF BROKEN DREAMS"

D (2:29)

Ah ah ah ah ah ah I walk alone and I walk a

F5 [Em] Ab5 [G] Eb5 [D] Bb5^{VI} [A] F5 [Em] Ab5 [G] Eb5 [D] Bb5 [A] C5

Gtr. 3 plays Rhy. Fig. 2 simile (see meas. 5)

* Gtrs. 1 and 2 (tremolo effect off)

27 Gtr. 1 (w/tremolo effect)

E Interlude (2:41)

Db5 [C5] Ab5 [G5] Eb5 [D5] F5 [E5]

Gtrs. 1 and 2 play Rhy. Fig. 3 (see meas. 19)

* Gtrs. 4 and 5 (elec. w/dist.)

Riff B

Bass plays Bass Fig. 3 (see meas. 19)

* composite arrangement

Db5 [C5] Ab5 [G5] Eb5 [D5] F5 [E5]

end Riff B

Db5 [C5] Ab5 [G5] Eb5 [D5] F5 [E5]

35 Gtrs. 4 and 5

Gtr.

Bass

Db5 [C5] Ab5 [G5] C5 [B5]

"BOULEVARD OF BROKEN DREAMS"

F 3rd Verse (3:07)

3. I walk this empty street on the Boulevard of Broken Dreams when the city sleeps and

Fm

Ab5

Ab

Eb

Bb

Fm

Ab

sleeps and

[Em]

[G5]

[G]

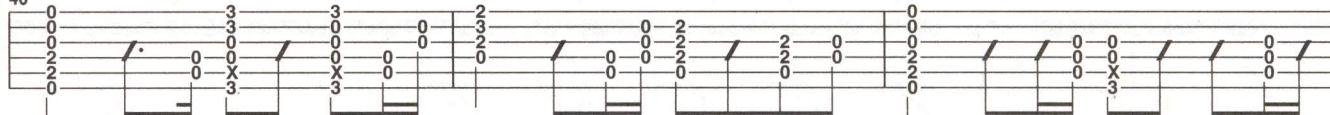
[D]

[A]

[Em]

[G]

40 Gtr. 3



go back to chorus [C]

I'm the only one and I walk

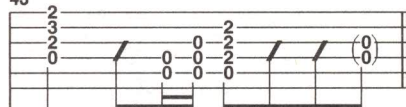
Eb

Bb

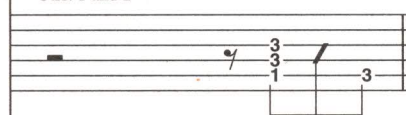
[D]

[A]

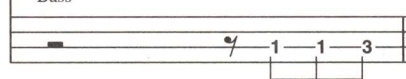
43 Gtr. 3



Gtrs. 1 and 2



Bass

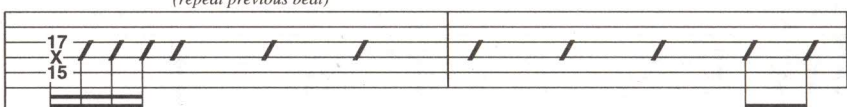


G (3:38)

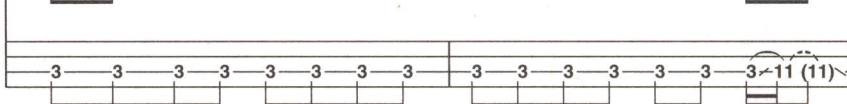
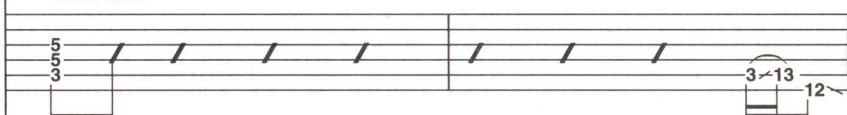
alone

C5

Gtrs. 4 and 5 (repeat previous beat)



Gtrs. 1 and 2



H Outro (3:44)

N.C.(F5)

(Db5)

(Eb5)

(D5)

1., 2., 3.
(Ab5)

(E5)

4.

Ab5

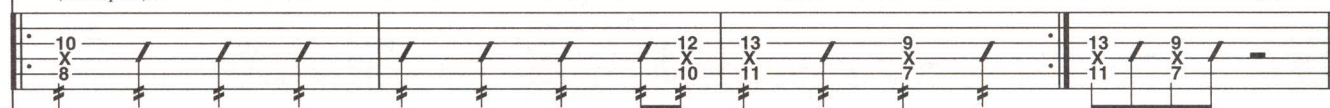
E5

* Gtr. 5 (w/wah pedal and phaser)
(trem. pick)



* Gtr. 5 doubles Gtr. 4 w/ad lib. variation on repeats.

Gtr. 4 (w/wah pedal and phaser)
(trem. pick)



Gtrs. 1 and 2



Bass

