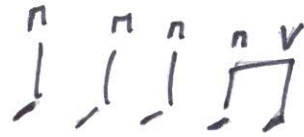


# Building A Mystery

Sarah McLachlan



Intro: [: Bm | G | D | A :]

Bm G D A  
You come out at night, that's when the energy comes

Bm G D A  
And the dark side's light, and the vampires roam

Bm G D A  
You strut your rasta wear, and your suicide poem

Bm G D A E %  
And a cross from a faith, that died before Jesus came

G A  
You're building a mystery | Bm | G | D | A |

Bm G D A  
You live in a church, where you sleep with voodoo dolls

Bm G D A  
And you won't give up the search, for the ghosts in the halls

Bm G D A  
You wear sandals in the snow, and a smile that won't wash away

Bm G D A  
Can you look out the window, without your shadow getting in the way

E % G %  
Oh you're so beautiful, with an edge and a charm

E % G A  
But so careful, when I'm in your arms

CHORUS Bm G D A  
'Cause you're working, building a mystery  
Bm G D A  
holding on and holding it in,  
Bm G D A  
yeah you're working, building a mystery,  
Bm G D A % % %  
and choosing so carefully

Bm G D A  
You woke up screaming aloud, a prayer from your secret god

Bm G D A  
you feed off our fears, and hold back your tears

Bm G D A  
Give us a tantrum, and a know it all grin

Bm G D A  
just when we need one, when the evening's thin

E           %       G           %  
 Oh you're a beautiful, a beautiful fucked up man  
 E       %               G           A  
 you're setting up your, razor wire shrine

CHORUS                   Bm                   G       D       A  
                               'Cause you're working, building a mystery  
                               Bm    G            D    A  
                                   holding on and holding it in,  
                               Bm                   G       D       A  
                               yeah you're working, building a mystery,  
                               Bm    G            D    A  
                                   and choosing so carefully

Solo : | G | A | G | % | E | % | G | A |  
        | G | A | G | % |

CHORUS                   E                   %       G       A  
                               'Cause you're working, building a mystery  
                               Bm    G            D    A  
                                   holding on and holding it in,  
                               Bm                   G       D       A  
                               yeah you're working, building a mystery,  
                               Bm    G            D    A  
                                   and choosing so carefully

Bm                   G       D       A  
   Yeah you're working, building a mystery  
 Bm    G            D    A  
   holding on and holding it in,  
 Bm                   G       D       A  
   yeah you're working, building a mystery,  
 Bm    G            D    A  
   and choosing so carefully

| Bm | G | D A  
           You're building a mystery