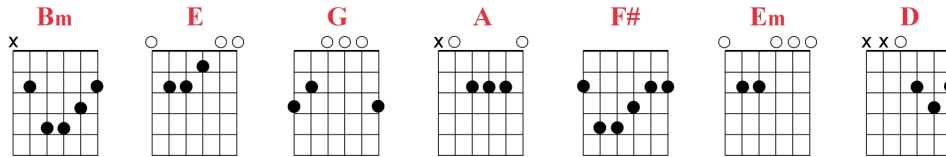
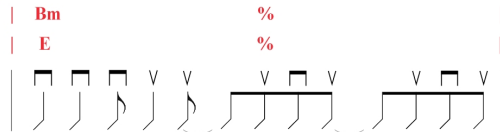


LIE TO ME (Jonny Lang)



Album: Lie to me (1997)

* INTRO + VERSE + SOLO



* INTRO:

| Bm % | E % | 2 fois

* VERSE:

| Bm
Lie to me
% | E % |
And tell me everything is alright
| Bm
Lie to me
% | E % |
And tell me that you'll stay here tonight.



| G | A |
Tell me that you'll never leave,
| Bm | E |
Ooooh, I just try to make believe
| G |
That everything,
% | F# |
Everything you're telling me is true
% |
Come on baby, won't you just



| Bm |
Lie to me
% | E |
Come on baby, go ahead and lie to me
| F# | Bm |
Ooooh Yeah lie to me
% | E |
You know what I'm talkin about...
| F# |
Go ahead and lie to me ooohaah

* VERSE:

| Bm % | E
Lie to me, it don't matter anymore
% | Bm % | E % |
It could never be the way it was before

* **SOLO:**

* **SOLO:**

Bm	%	E	%	Fade
1	100	100	100	100
2	100	100	100	100
3	100	100	100	100
4	100	100	100	100
5	100	100	100	100
6	100	100	100	100
7	100	100	100	100
8	100	100	100	100
9	100	100	100	100
10	100	100	100	100
11	100	100	100	100
12	100	100	100	100
13	100	100	100	100
14	100	100	100	100
15	100	100	100	100
16	100	100	100	100
17	100	100	100	100
18	100	100	100	100
19	100	100	100	100
20	100	100	100	100
21	100	100	100	100
22	100	100	100	100
23	100	100	100	100
24	100	100	100	100
25	100	100	100	100
26	100	100	100	100
27	100	100	100	100
28	100	100	100	100
29	100	100	100	100
30	100	100	100	100
31	100	100	100	100
32	100	100	100	100
33	100	100	100	100
34	100	100	100	100
35	100	100	100	100
36	100	100	100	100
37	100	100	100	100
38	100	100	100	100
39	100	100	100	100
40	100	100	100	100
41	100	100	100	100
42	100	100	100	100
43	100	100	100	100
44	100	100	100	100
45	100	100	100	100
46	100	100	100	100
47	100	100	100	100
48	100	100	100	100
49	100	100	100	100
50	100	100	100	100
51	100	100	100	100
52	100	100	100	100
53	100	100	100	100
54	100	100	100	100
55	100	100	100	100
56	100	100	100	100
57	100	100	100	100
58	100	100	100	100
59	100	100	100	100
60	100	100	100	100
61	100	100	100	100
62	100	100	100	100
63	100	100	100	100
64	100	100	100	100
65	100	100	100	100
66	100	100	100	100
67	100	100	100	100
68	100	100	100	100
69	100	100	100	100
70	100	100	100	100
71	100	100	100	100
72	100	100	100	100
73	100	100	100	100
74	100	100	100	100
75	100	100	100	100
76	100	100	100	100
77	100	100	100	100
78	100	100	100	100
79	100	100	100	100
80	100			

Si la hauteur de la chanson a été augmentée d'un demi-ton, on peut la jouer avec les accords ci-haut.