

Mama I'm coming home - Ozzy Osbourne

Tune Down 1/2 Step



E
Times have changed and times are strange

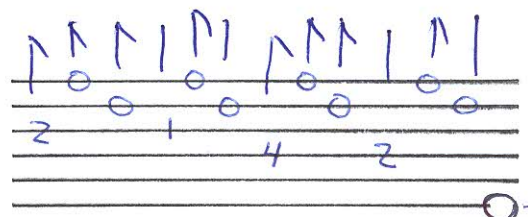
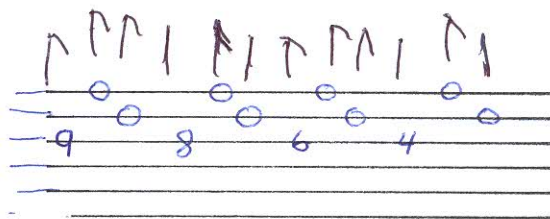
E
Here I come, but I aint the same

A² E
Mama, Im coming home

E
Times gone by seem to be

E
You could have been a better friend to me

A² E
Mama, Im coming home



| C#m A² |
You took me in and you drove me out

E
Yeah, you had me hypnotized

| C#m A² |
Lost and found and turned around

| B
By the fire in your eyes

E
You made me cry, you told me lies

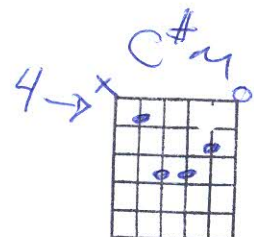
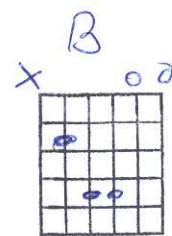
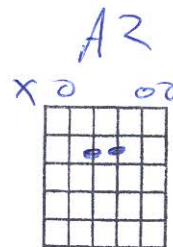
E
But I cant stand to say goodbye

A² E
Mama, Im coming home

E
I could be right, I could be wrong

E
Hurts so bad, its been so long

A² E
Mama, Im coming home



| C#m A2 |
 Selfish love yeah were both alone
 E
 The rise before the fall
 | C#m A2 |
 But Im gonna take this heart of stone
 | B F# G# |
 I just got to have it all

F# G#

Refrain

A2 E
 Ive seen your face a hundred times
 A2 E
 Everyday weve been apart
 | A2 B | E A2 |
 I dont care about the sunshine, yeah
 | A2 B | C D | E
 cause mama, mama, Im coming home
 | C D | B ||
 Im coming home

Acoustic || G A E / | G A E / |
 | G A E / | B ||
 Electric || A | E | A | E | A B |
 | C#m B A / | B ||

|| C#m A2 |
 You took me in and you drove me out
 E
 Yeah, you had me hypnotized
 | C#m A2 |
 Lost and found and turned around
 B F# G#
 By the fire in your eyes

REFRAIN