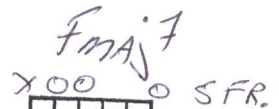
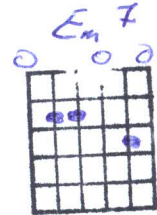
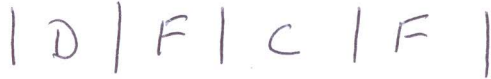


Old Man - Neil Young



Fmaj7 1/2 1/2 D 1/2
 Old man look at my life, I'm a lot like you were

Fmaj7 1/2 1/2 D | F | C | C G |
 Old man look at my life, I'm a lot like you were

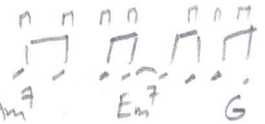


D F C G
 Old man look at my life, Twenty four and there's so much more

D F C F
 Live alone in a paradise, That makes me think of two

D F C G
 Love lost, such a cost, Give me things that don't get lost.

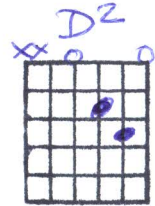
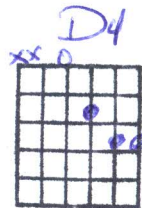
D C F G D 1/2
 Like a coin that won't get tossed Rollin' home to you.



D 1/2 | Am7 | Em7 G |
 Old man take a look at my life I'm a lot like you

D 1/2 | Am7 | Em7 G |
 I need someone to love me the whole day through

D 1/2 | Am7 | Em7 G |
 Oh, one look in my eyes and you can tell that's true.

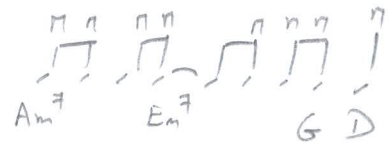


D F C G
 Lullabies, look in your eyes, Run around the same old town.

D F C F
 Doesn't mean that much to me To mean that much to you

D F C G
 I've been first and last Look at how the time goes past.

D C F G D 1/2
 But I'm all alone at last Rolling home to you.



D | % | Am⁷ | Em⁷ G |

Old man take a look at my life I'm a lot like you

D | % | Am⁷ | Em⁷ G |

I need someone to love me the whole day through

D | % | Am⁷ | Em⁷ G |

Oh, one look in my eyes and you can tell that's true.

Fmaj⁷ | % | % | D² D | D⁴ D D² D |

Fmaj⁷ | % | % | D | % |

Old man look at my life, I'm a lot like you were

Fmaj⁷ | % | % | D | F | C | C | G | D

Old man look at my life, I'm a lot like you were

ÉCOLE DE GUITARE
CLAUDE SAINDON

apprendrelaguitare.ca
(819) 474-6445