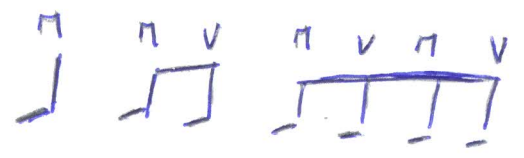


Shuffle

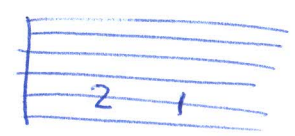


♩ = 170

# San Francisco Bay Blues

Eric Clapton

Fill



| C | F | C | C7 | F | % | C | % |  
 | F | % | C | A7 | D | % | G7 | % |

Fill

C F C C7  
 I got my blues from my baby late by the San Francisco Bay  
 F C  
 The old shoe liner not so far away  
 F  
 It didn't mean to treat her so bad  
 C A7  
 She was the best girl I've ever had  
 D  
 I said goodbye, I can't take her cry  
 G7  
 Gonna lay down and die

C F C C7  
 I ain't got a nickel and I ain't got a life it's all  
 F E  
 If you don't come back and gonna loose your mind  
 F  
 If I ever get back to stay  
 C A7  
 It's gonna be another brand new day  
 D  
 Walking with my baby down  
 G C G7  
 Back to San Francisco Bay

| C | F | C | C7 | F | % | C | % |  
 | F | % | C | A7 | D | % | G7 | % |

| C | F | C | C7 | F | % | E | % |  
| F | % | C | A7 | D | G | C | G7 |

| C F | C  
Fiddle down looking from a back door

| C F | C  
Party with your favorite girl

F C  
Woman I'm so crazy about you, she don't love me no more

F  
Think I'll catch me the first train

C A7  
Gonna be there too

D G7  
We're on the way to the gale of the night, taking only you

| C F | C  
Meanwhile living in the city

| C F | C  
Drinking by the golden sand

F  
Thought I heard my baby calling

E  
Wishing you could call my name

F  
If I ever get back to stay

C A7  
It's gonna be another brand new day

2x

D G C A7  
Walking with my baby down, back to San Francisco Bay

D G | C F | C G7 C |  
Walking with my baby down, back to San Francisco Bay