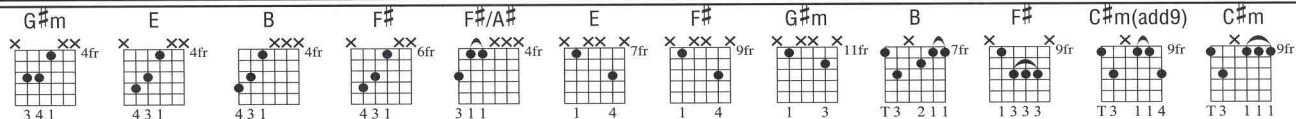


"SNOW ((HEY OH))" RED HOT CHILI PEPPERS

As heard on **STADIUM ARCADIUM** (WARNER BROS.)

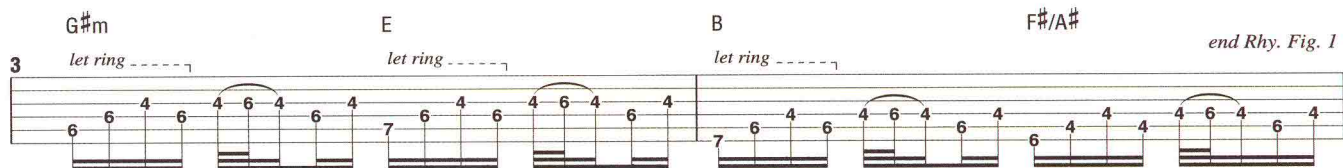
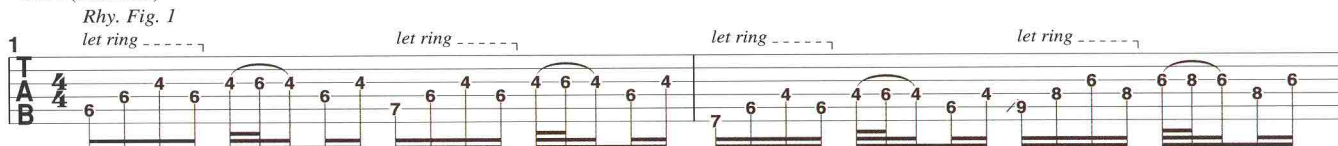
Words and Music by **Anthony Kiedis, Flea, John Frusciante and Chad Smith** * Transcribed by **Jeff Perrin**



A Intro (0:00)

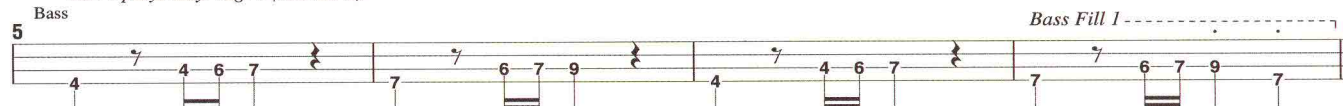
Moderately ♩ = 104

Gtr. 1 (clean elec.)
Rhy. Fig. 1



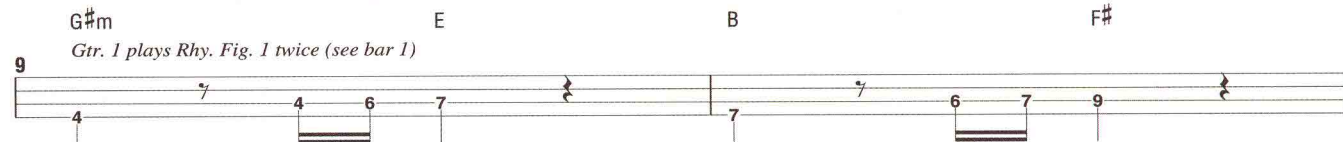
B (0:09, 2:22)

Gtr. 1 plays Rhy. Fig. 1 (see bar 1)

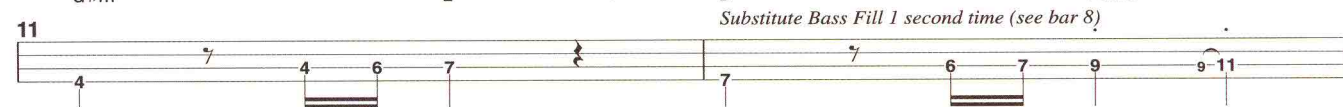


C Verses (0:18, 0:55, 2:32)

1. Come to decide that the things that I tried were in my life just to get high on
2. When will I know that I really can't go to the well once more Time to decide on
3. Went to descend to amend for a friend all the channels that have broken down



When I sit alone come get a little known but I need more than myself this time
When it's killin' me when will I really see all that I need to look inside
Now you bring it up I'm gonna ring it up just to hear you sing it out



Step from the road to the sea to the sky and I do believe that we rely on
Come to believe to that I better not leave before I get my what chance to ride on
Step from the road to the sea to the sky and I do believe what we rely on

13

G#m E B F#

When I lay it on come get to play it on All my life to sacrifice
When it's killin' me what do I really need all that I need to look inside
When I lay it on come get to play it on All my life to sacrifice

15

G#m E B F#/A#

Substitute Bass Fill 2 third time (see below)

*Substitute note and slide in parenthesis second time.

D (0:37, 1:14, 2:50)

(1., 3.) Hey oh listen what I say oh
hey oh now listen what I say oh
(2.) Hey oh listen what I say oh
hey oh look at what I say oh

(1st time) go back to **C** 2nd Verse
I got your
Come back and The

17

G#m E B F# G#m E B F#/A#

Gr. 1 plays Rhy. Fig. 1 twice (see bar 1)

**Play note in parenthesis 1st, 3rd and 5th times.

E Pre-chorus (1:32, 3:08)

more I see the less I know the more I like to let it go
E F# G#m

Gr. 2 plays Fill 1 second time (see below)

Gr. 1 (repeat previous beat)

21

Bass

Fill 1 (3:08)

E F# G#m F# E

*Gtr. 2 (elec. w/dist.)

*composite arrangement (multiple overdubbed guitars arr. for one part)

Bass Fill 2 (3:08)

B F#

"SNOW ((HEY OH))"

GNX4 powered
download Guitar Workstation® presets @ www.digitech.com

Hey oh whoa

G#m F# E

23 Gtr. 1 substitutes Rhy. Fill 1 second time (see below)

25 Repeat bar 25 second time

F Chorus (1:47, 3:23)

- (1.) Deep beneath the cover of another world so perfect undecided wonder where it's
(2.) Privately divided by a another tracks will be concealed and there's
(3.) In between the cover of another tracks will be concealed and there's
(4.) Running through the field where all my tracks will be concealed and there's
- F#

B Rhy. Fig. 2 (w/light dist.)

27 Th. Bass Fig. 1 Substitute Bass Fill 3 second and fourth times (see below)

*Strum w/fingernails (downstrokes) and thumbnail (upstrokes).

1., 2., 3.
so white as snow
nowhere white to go
so white as snow

C#m(add9) end Rhy. Fig. 2

29 Th. end Bass Fig. 1

Rhy. Fill 1 (3:16)

Gtr. 1 G#m F#

Bass Fill 3 (1:58, 2:16, 3:34, 3:52, 4:10, 4:27, 4:45, 5:03)

F#/A#

4. nowhere to go (1st time) go back to [B] (2.) I Oh said

C#m(add9) Gtr. 2 w/fdbk. second time (pitch: G#)

G (3:58)
Hey (ooh) hey yeah oh
B F#
Gtrs. 1 and 2

Bass plays Bass Fig. 1 twice simile (see bar 27) Bass substitutes Bass Fill 3 second time

yeah (ooh) tell my love now
C#m(add9)

H (4:16)
(1.) Deep beneath the cover of another perfect wonder where it's so white as snow
(2.) Privately divided by a world so undecided and there's nowhere to go
(3.) Deep beneath the cover of another perfect wonder where it's so white as snow
(4.) Running through the field where all my tracks will be concealed and there's nowhere to go I said
(5.) Hey oh yeah yeah ah ow yeah tell my love now
(6.) Hey oh yeah yeah ah ow yeah tell my love now
B F# C#m(add9)
Gtrs. 1 and 2 play Rhy. Fig. 2 six times (see bar 27)
Gtr. 3 (elec. w/dist.)
Riff A (play 6 times) end Riff A

37 Bass plays Bass Fig. 1 six times simile (see bar 27) Bass substitutes Bass Fill 3 second, fourth and sixth times

I **Outro** (5:09)
B F#
Gtr. 3 plays Riff A simile (see bar 37)
Gtr. 5 (elec. w/heavy dist.)

41 15 16 P.M. full P.M.
Gtr. 4 (elec. w/heavy dist.) full P.M. full P.M.
Gtrs. 1 and 2
Bass

[illegible]