

# The Pedals That Make The Tone

For exclusive tips on how to sound like this song, visit [www.BossUS.com/tone](http://www.BossUS.com/tone)



## "THROUGH GLASS" STONE SOUR

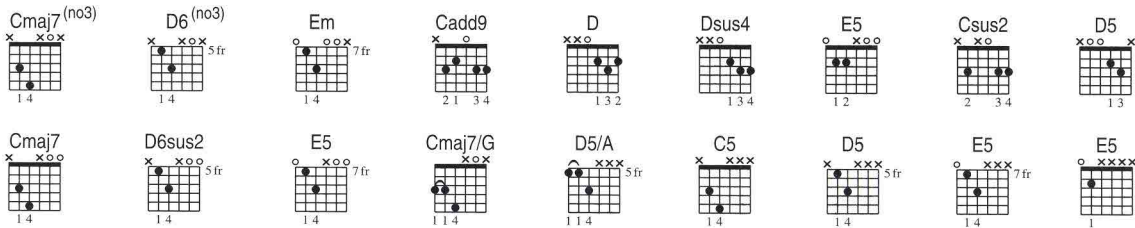
As heard on **COME WHAT(EVER) MAY** (ROADRUNNER)

Words and Music by **Shawn Economaki, Josh Rand, Corey Taylor and James Root** \* Transcribed by **Jeff Perrin**

All guitars are tuned down one half step (low to high: **E $\flat$  A $\flat$  D $\flat$  G $\flat$  B $\flat$  E $\flat$ ).**

**Bass tuning (low to high): E $\flat$  A $\flat$  D $\flat$  G $\flat$ .**

All pitches sound in the key of E $\flat$  minor, one half step lower than written.



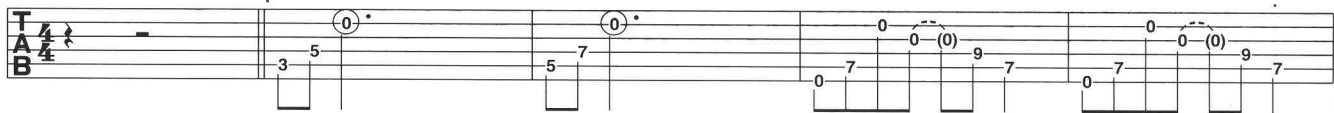
### A 1st Chorus (0:00)

Moderately  $\text{♩} = 106$

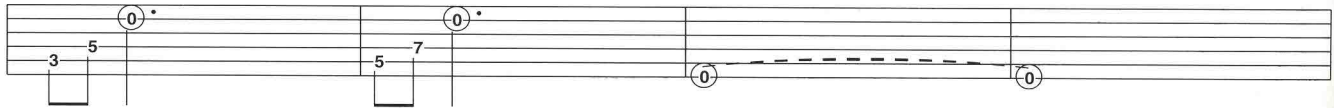
I'm looking at you through the glass Don't know how much time has passed Oh God it feels like forever but no one ever tells you that for-

Gtr. 1 (acous.)

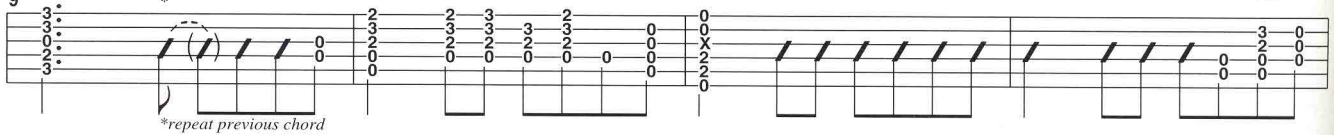
1 *let ring throughout*



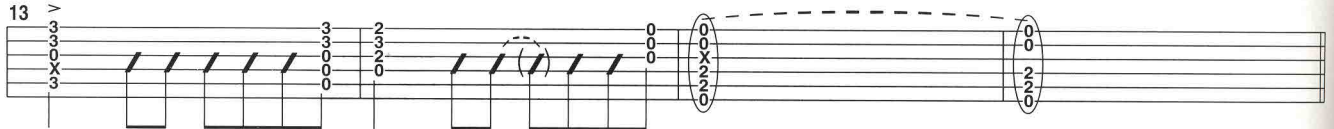
ever feels like home sitting all alone inside your head 'Cause I'm looking at you through



the glass Don't know how much time has passed All I know is that it feels like forever but no one ever tells you that for-



ever feels like home sitting all alone inside your head How do you feel



# "THROUGH GLASS"

**B 1st Verse (0:38)**

That is the question but I forget you don't expect an easy answer when  
 Cmaj7 D6sus2 E5 D6sus2 Cmaj7

17 *Rhy. Fig. 1*

something like a soul becomes initialized and folded up like paper dolls and little notes You can't expect a bit of hope So  
 D6sus2 E5 D6sus2 Cmaj7

*Gr. 1 plays Rhy. Fig. 1 (see bar 17)*  
*Gr. 2 (elec. w/clean tone, tremolo effect and subtle delay)*

21 *Riff A* *end Riff A*

pitch: E

while you're outside looking in describing what you see remember what you're staring at is me 'Cause I'm looking at you through  
 D6sus2 E5 D5

*Gr. 2 repeats Riff A (see bar 21)*  
*Gr. 1*

25 *Rhy. Fig. 2* *end Rhy. Fig. 2*

**C 2nd Chorus (1:05)**

the glass Don't know how much time has passed All I know is that it feels like forever but no one ever tells you that for-  
 Csus2 D E5 D5

*Gr. 2 (trem. effect off)*

29

*Gr. 1*

ever feels like home sitting all alone inside your head How much is real  
 Csus2 D E5

*N.H.*

33

pitch: B

