

| / / / / D | G / / / / D |

(-1/2)

d=70

TROUBLE CAT STEVENS

| G | D |

Trouble, oh trouble set me free

| Am C | Am

I have seen your face and it's too much, too much for me

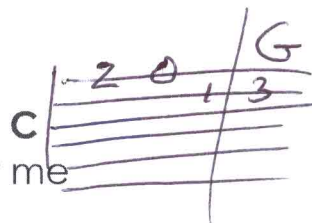
| G | D |

Trouble, oh trouble can't you see

| Am C |

You're eating my heart away

| Am C |
and there's nothing much left of me



Am F D |

Chorus #1:

| EA | G D | G D |

I've drunk your wine you have made your work mine

| Am C |

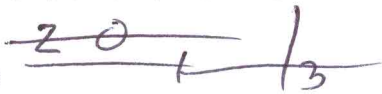
So won't you be fair, so won't you be fair

| EA | G D | G D |

I don't want no more of you so won't you be kind to me

| Am C |

Just let me go where, I have to go there



| G | D |

Trouble, oh trouble move away

| Am C | Am C | riff 1

I have seen your face and it's too much for me today

| G | D |

Trouble, oh trouble can't you see

| Am C | Am C |

You have made me a wreck now won't you leave me in my misery

Am F D |

Chorus #2:

| E A | G D | G D |
I've seen your eyes and I can see death's disguise

| Am | C |
Hangin' on me, hangin' on me

| E A | G D | G D |
I'm beat, I'm torn shattered and tossed and worn

| Am | C | 20
Too shocking too see, too shocking too see

| G | D |
Trouble, oh trouble move from me

| Am C | Am C | riff 1
I have paid my debt now won't you leave me in my misery

| G | D |
Trouble, oh trouble please be kind

| Am C | Am C |
I don't want no fight and I haven't got a lot of time