

The Pedals That Make The Tone

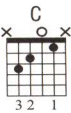
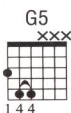
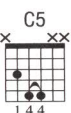
For exclusive tips on how to sound like this song, visit www.BossUS.com/tone



"WHO MADE WHO" AC/DC

As heard on **WHO MADE WHO** (EPIC)

Words and Music by Angus Young, Malcolm Young and Brian Johnson * Transcribed by Jeff Perrin



A Intro (0:00)
Moderately ♩ = 124
(C5)

Gr. 1 (elec. w/dist.) (play 4 times) Rhy. Fig. 1 (repeat previous bar)

The

Bass (play 4 times) Bass Fig. 1

B 1st Verse (0:15)
video
C5

Gr. 1

game says play me Face it on a level but it take you every time on a

Bass plays Bass Fig. 1 four times (see bar 2)

one on one Feel it runnin' down your spine
A5 G5

Gr. 1 Rhy. Fig. 2 Rhy. Fig. 3

Bass Bass Fig. 2 Bass Fig. 3

14 Nothin' gonna save your one last dime 'cause it own you
C5

Gr. 1

Bass plays Bass Fig. 3 twice (see bar 12) Bass plays Bass Fig. 1 four times (see bar 2)

through and through The

Gr. 1 plays Rhy. Fig. 1 twice (see bar 2)

18 Gr. 2 (elec. w/dist.)

"WHO MADE WHO"

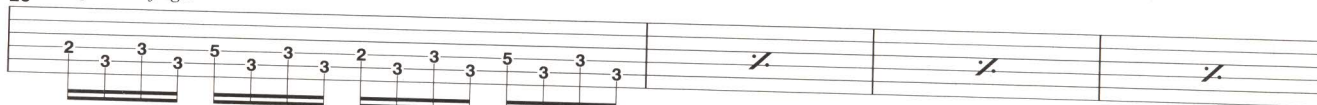
C 2nd Verse (0:42)

data bank know my number

Says I gotta pay 'cause I made the grade last year

Gtr. 1 plays Rhy. Fig. 1 four times (see bar 2)
w/pick and finger

20



Bass plays Bass Fig. 1 four times (see bar 2)

A5

Gtr. 1 plays Rhy. Fig. 2 twice (see bar 10)

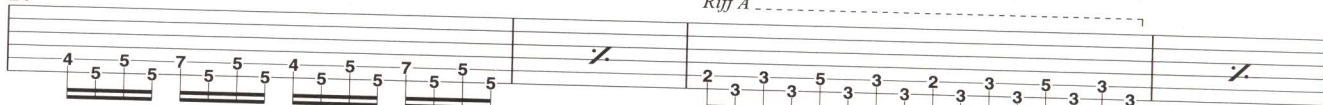
Feel it when I turn the screw

G5

Gtr. 1 plays Rhy. Fig. 3 four times (see bar 12)

Riff A

24



Bass plays Bass Fig. 2 twice (see bar 10)

Bass plays Bass Fig. 3 four times (see bar 12)

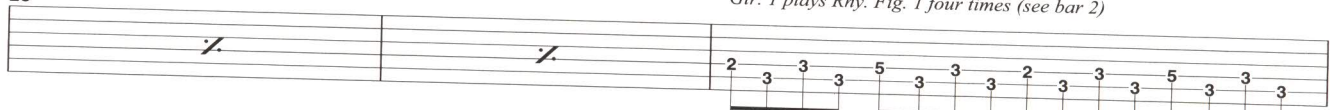
Kick you 'round the world There ain't a thing that

it can't do

C5

Gtr. 1 plays Rhy. Fig. 1 four times (see bar 2)

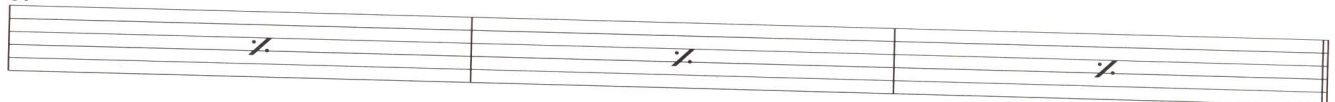
28



Bass plays Bass Fig. 1 four times (see bar 2)

do to you yeah

31



D 1st Chorus (1:09)

Who made who
Who made who

who made you
who made you

If you made them and they made you Ain't nobody told you
who pick up the bill and who made

C

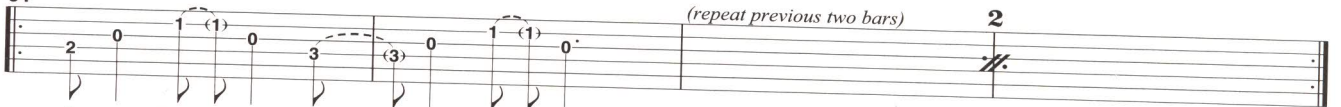
Csus4

Csus4

Gtr. 1 plays Rhy. Fig. 1 eight times (see bar 2)
Rhy. Fig. 4

let ring throughout

34



Bass plays Bass Fig. 1 eight times (see bar 2)

who

G5

Fsus2

C

yeah

G5

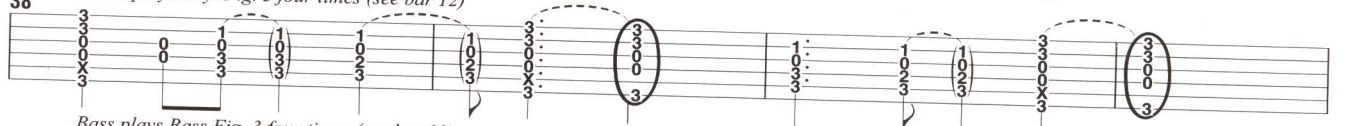
Fsus2

C

G5

Who made

38



Bass plays Bass Fig. 3 four times (see bar 12)

who

C

Csus4

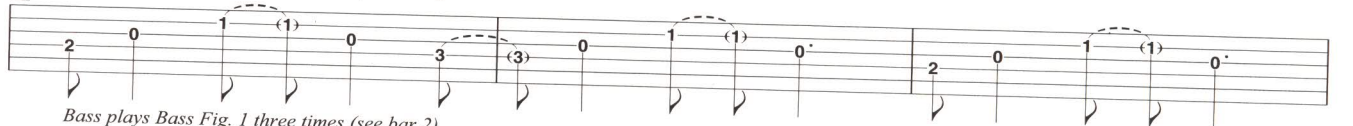
Who

turned the screw

C

Gtr. 1 plays Rhy. Fig. 1 three times (see bar 2)

42



Bass plays Bass Fig. 1 three times (see bar 2)

"WHO MADE WHO"

Yeah

45 F#sus2 Gtr. 2 A5

w/bar

Gtr. 1

(doubled)

*repeat previous chord

Bass

E Guitar Solo (1:42)

yeah

slight P.H.

47

51 G5 Gtr. 2 Fsus2 C G5 pick scrape

Gtr. 1

Bass plays Bass Fig. 3 twice (see bar 12)

53 F5 Yeah

Gtr. 2

Gtr. 1

Bass

*Tap note repeatedly w/pick while performing rapid, trilled hammer-ons and pull-offs.

F 3rd Verse (1:57)

Satellite send me picture
C Csus4
Gtr. 1 plays Rhy. Fig. 1 four times (see bar 2)

Get it in the eye take it to the wire spinnin' like a
C Csus4

55 Gtr. 2

Bass plays Bass Fig. 1 four times (see bar 2)

dynamo

A5

Gtr. 1 plays Rhy. Fig. 2 twice (see bar 10)

Feel it goin' round and round

G5

Gtr. 1 plays Rhy. Fig. 3 four times (see bar 12)

59

Bass plays Bass Fig. 2 twice (see bar 10)

Runnin' outta chips you got no line

in an eight-bit town
don't look down

no

so

C Csus4

Gtr. 1 plays Rhy. Fig. 1 four times (see bar 2)

63

Bass plays Bass Fig. 1 four times (see bar 2)

"WHO MADE WHO"

The Pedals That Make The Tone
www.BossUS.com/tone

G 2nd Chorus (2:23)

Who made who
Who made who

who made you
who made you

who made who Ain't nobody told you
if you made them and they made you who pick up the bill and who made

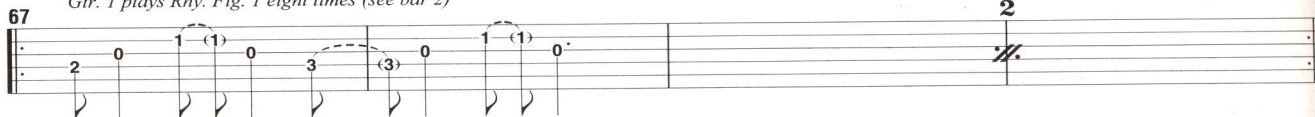
C

Csus4

C

Csus4

Gtr. 1 plays Rhy. Fig. 1 eight times (see bar 2)



Bass plays Bass Fig. 1 eight times (see bar 2)

who

Ain't nobody told you
Who made you

oh

Who made who
Who made

G5

Fsus2

C

G5

Fsus2

C

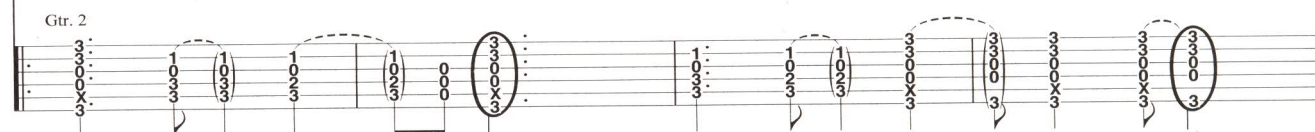
G5

Gtr. 1 plays Rhy. Fig. 3 four times (see bar 12), then doubles Gtr. 2 simile

Gtr. 3 (elec. w/dist.)



Gtr. 2



Bass plays Bass Fig. 3 eight times (see bar 12)

who
(Who made who)

And who made

who
(Who made who)

yeah

C

Csus4

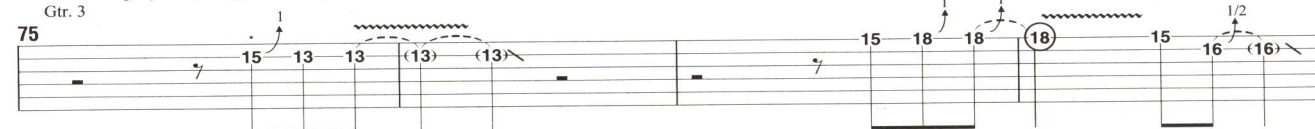
C

Csus4

Gtr. 1 plays Rhy. Fig. 1 four times (see bar 2)

Gtr. 2 plays Rhy. Fig. 4 twice (see bar 34)

Gtr. 3



Bass plays Bass Fig. 1 four times (see bar 2)

H Outro (3:01)

Oh

Nobody told you

G5

Fsus2

C

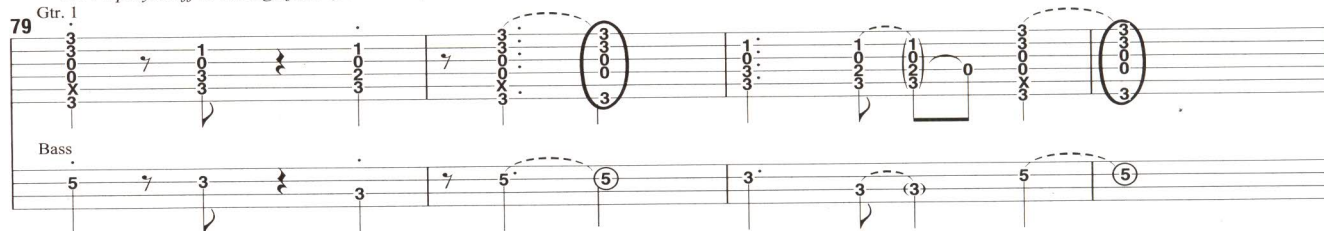
G5

Fsus2

C

G5

Gtr. 2 plays Riff A through fade (see bar 26)



Bass



fade out

Gtr. 2 continues Riff A through fade out

G5

Fsus2

C

G5

Fsus2

C

G5

