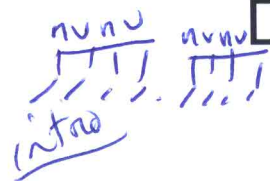


Donner l'accord

6/2 1/2



# Des Croissants de soleil

C A<sup>7</sup> D C D

Bass clef, 4/4 time signature. Handwritten notes in blue ink on the staff.

*capit*  
G

Bm

Empty guitar staff.

C A<sup>7</sup> D C D

Handwritten notes in blue ink on the staff.

D *Ref* G Em

Handwritten notes in blue ink on the staff.

C A<sup>7</sup>

Empty guitar staff.

D C D D *Ref* G

Handwritten notes in blue ink on the staff.

Em C

Empty guitar staff.

A<sup>7</sup> D *capit* G

Handwritten notes in blue ink on the staff.

Bm C

Empty guitar staff.

A7

D

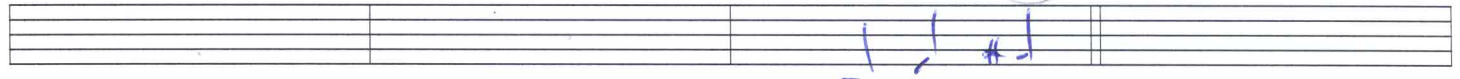
C

D

D

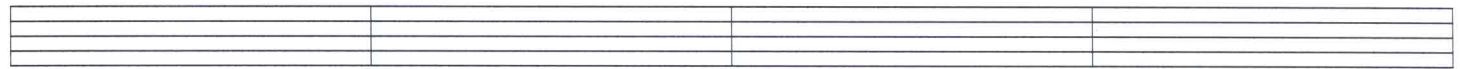
REF

G



Em

C



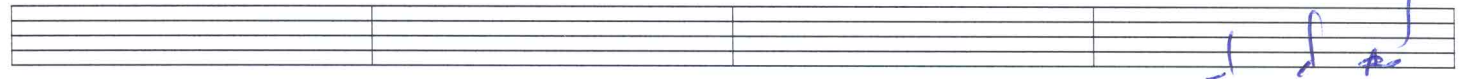
A7

D

C

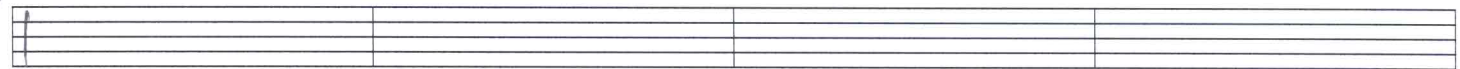
D

D



G

Em

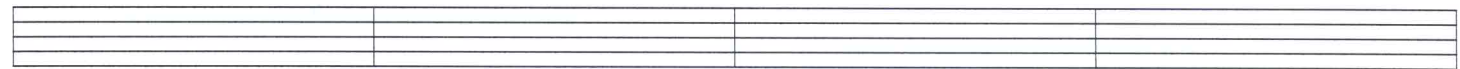


C

A7

D

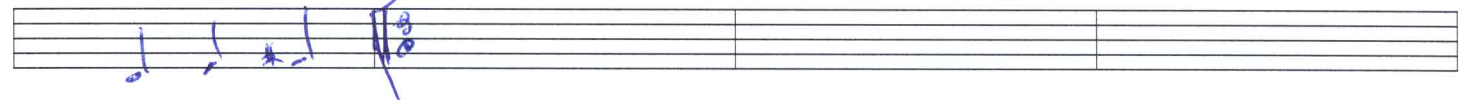
C D



D

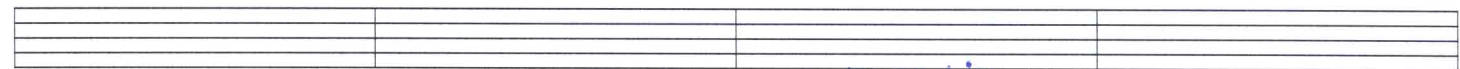
G

Em



C

A7



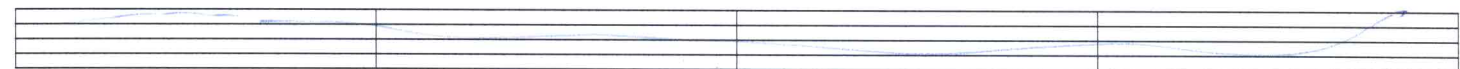
D

C

D

D

REPEAT AD LIB



ÉCOLE DE GUITARE  
CLAUDE SAINDON

apprendrelaguitare.ca  
(819) 474-6445