

Je ne suis qu'une chanson

12/8

intro
Abm

Abm

vocal
Abm

Bass clef, 4/4 time signature. First staff with a double bar line at the end.

Abm

Dbm

Second staff.

F#

F#

B4

B

Third staff.

Bbdim

A

couplet
Abm

Abm

Abm

Fourth staff with a double bar line.

Dbm

F#

Fifth staff.

B

7
Eb

Ref

Abm

AbmMaj7

Sixth staff with a double bar line.

Abm7

Abm6

Ebm

EbmMaj7

Ab

Dbm

DbmMaj7

Seventh staff with a double bar line.

F#7

B

parti
Eb

Ref

Abm

AbmMaj7

Eighth staff with a handwritten bass line: B, A, G, F, E, D.

Abm7

Abm6

Ebm

EbmMaj7

Ab7

Dbm

DbmMaj7

Ninth staff with a double bar line.

couplet 3

F#

Bbm7^{b5}

Eb7b5

Abm

Abm

Dbm

F#

B4

B

Bbdim

A

couplet 4

Abm

Abm

Dbm

F#7

B

Eb⁷

Ref

Abm

AbmMaj7 | Abm7

Abm6

Ebm

EbmMaj7 | Ebm7

Ab7

Dbm

DbmMaj7 | F#7

B

E

Ref

Am

AmMaj7 | Am7

Am6

Em

EmMaj7

Em7

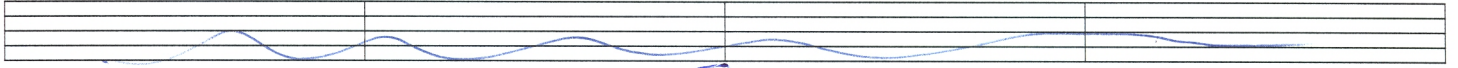
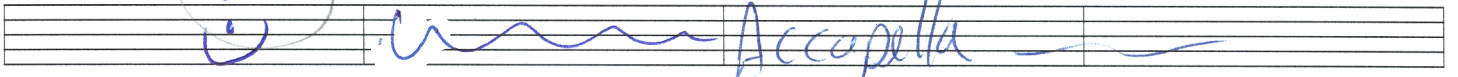
A7

Dm

DmMaj7 | G7

C^{ms7}

Bm 7. b5



F *tutti*

inst

Bbm

BbmMaj7/Bbm7

Bbm6



Fm

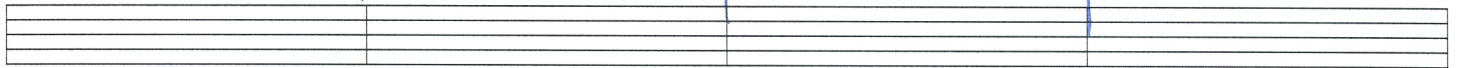
FmMaj7

Fm7

Bb7

Ebm

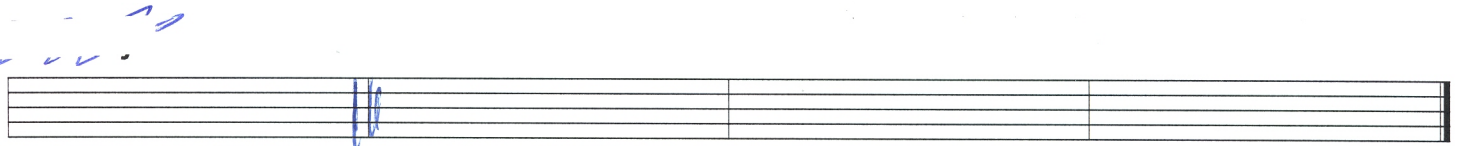
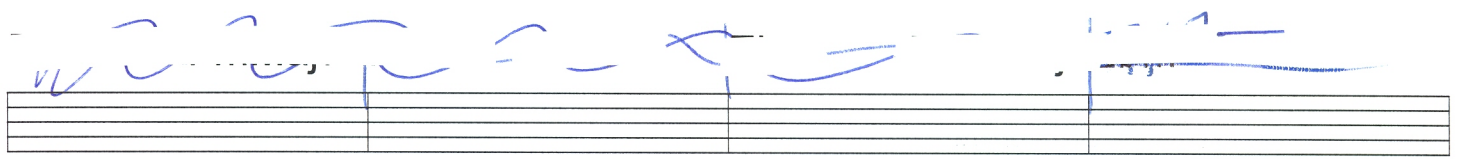
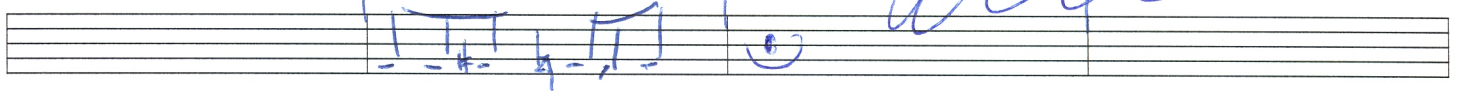
EbmMaj7/Ab7



DbMaj7

F *tutti*

Bbm



ÉCOLE DE GUITARE
CLAUDE SAINDON

apprendrelaguitare.ca
(819) 474-6445