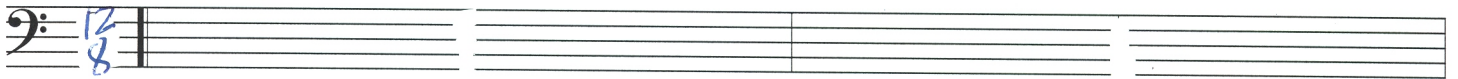


# laisse-pas tomber le vieux bluesman

Ab7

Db9

Ddim

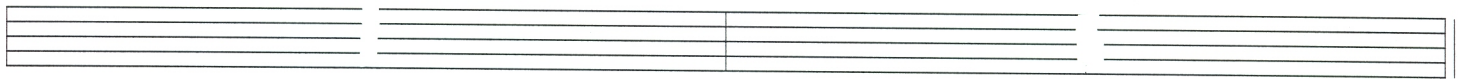


Ab/Eb

Fm<sup>7</sup>

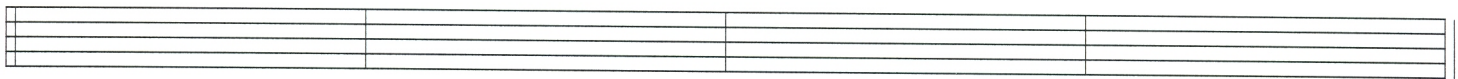
Bb<sup>13</sup>

Eb<sup>7</sup> #9



*couplet*  
4  
4

Ab7

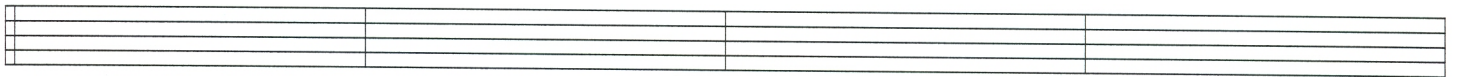


Ab7

Db7b9

Db7

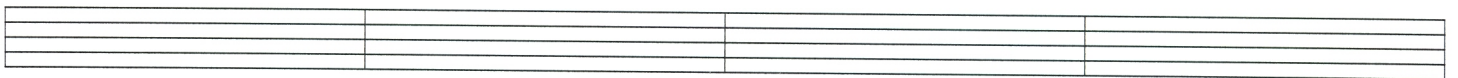
Db7



Ab7

Db7b9

Db7

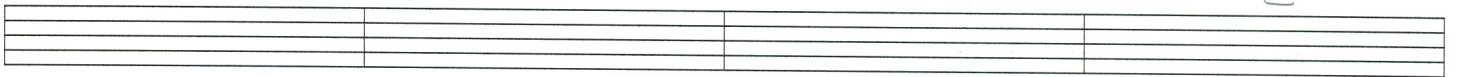


Bb

Bb7

Eb<sup>9</sup>

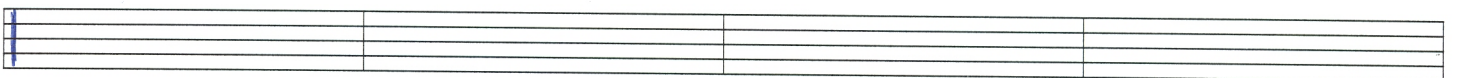
*Eb7b9*



*couplet*

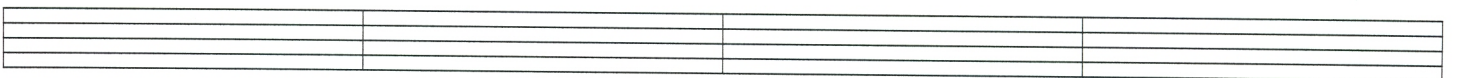
Ab7

Db9



Ab7

Db9

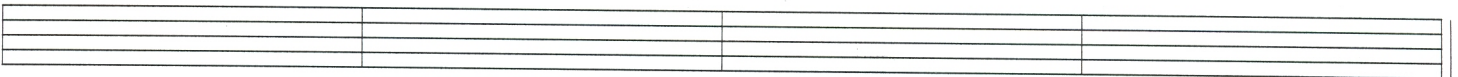


Bb

Bb7

Eb7

Eb7 Eb7 D7 Db7



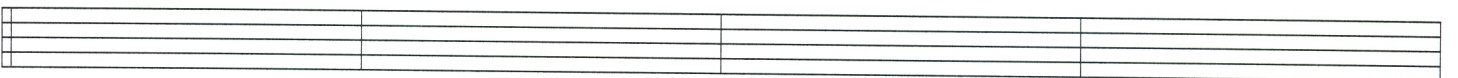
Cm7

Fm7

Cm7

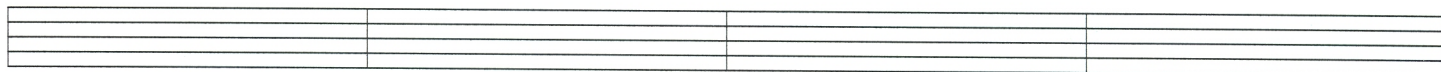
Fm7

REF



Db<sup>a</sup>

Eb<sup>a</sup>

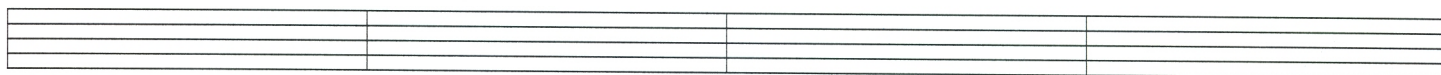


Cm7

Fm7

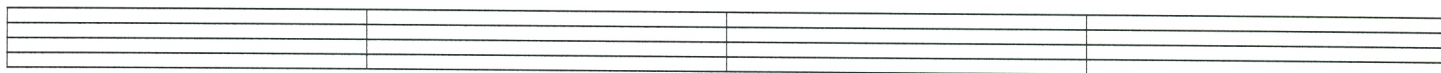
Cm7

Fm7



Db<sup>a</sup>

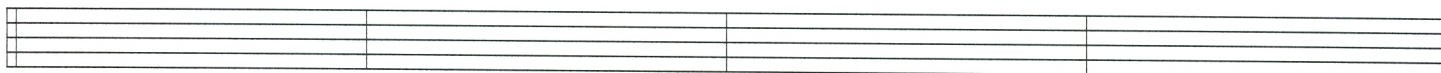
Eb<sup>a</sup>



F

Eb<sup>a</sup>

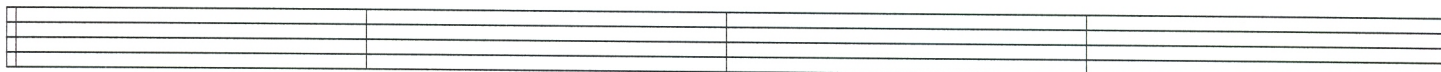
*Solo  
Guit*



Ab7

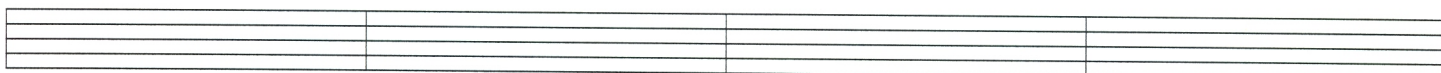
Db7

*2nd plot*



Ab7

Db7

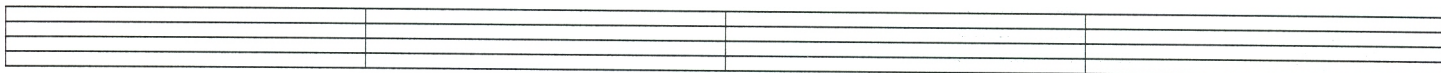


Bb

Bb7

Eb7

Eb7 Eb7 D7 Db7



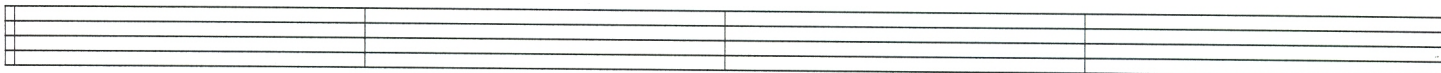
Cm7

Fm7

Cm7

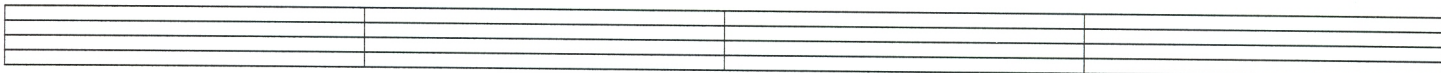
Fm7

*REF*



Db9

Eb9

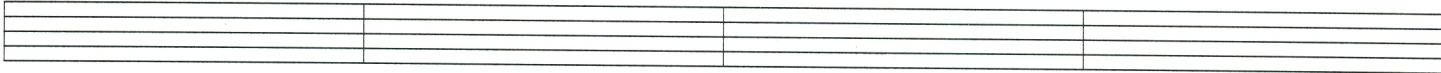


Cm7

Fm7

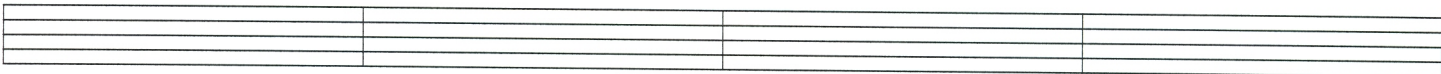
Cm7

Fm7



Db9

Eb9



Solo  
Guit

Ab Db<sup>9</sup> Bb<sup>9</sup> Eb<sup>9</sup>

C F F F

Capo

Bb7 Eb7

Bb7 Eb7 Eb7 D7 Db7

C7 F7 F7 F7 E7 Eb7

Dm7 Gm7 Dm7 Gm7

Eb9 F9

Dm7 Gm7 Dm7 Gm7

Eb9 F9

Dm7 Gm7 Dm7 Gm7

Eb9 F9