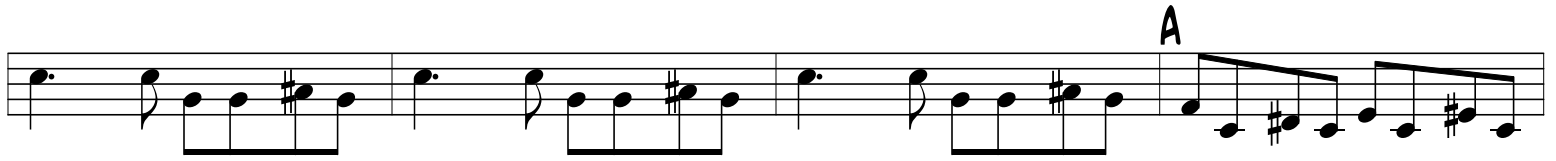


Achy breaky dance

The musical score for "Achy breaky dance" is written in bass clef, 4/4 time. It consists of ten staves of music. The first staff begins with a treble clef and a 4/4 time signature, followed by a bass clef. The melody is primarily composed of eighth notes, with some chords. The key signature has one sharp (F#). The score is marked with the letter 'A' at the beginning of the first staff and at the end of the third, fifth, seventh, and ninth staves. The letter 'E' is placed above the end of the second, fourth, sixth, and eighth staves. The music follows a consistent rhythmic and melodic pattern throughout.



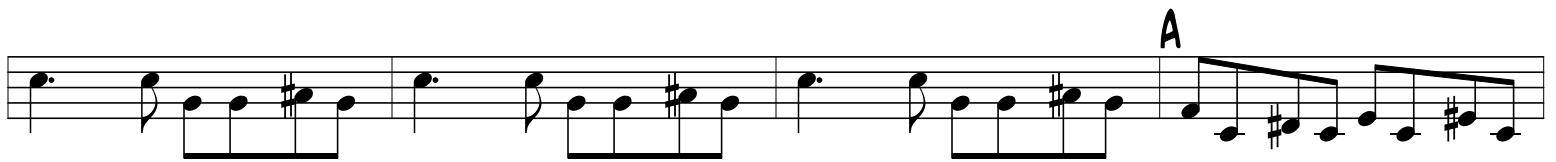
E



A



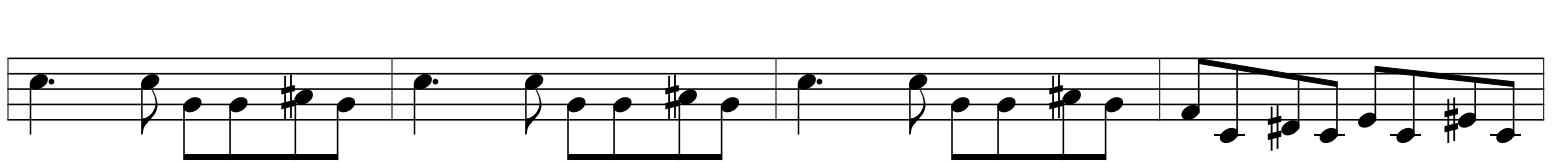
E



A



E



E



A

