

laisse-pas tomber le vieux bluesman

Ab7 *Piano/Sax* Db9 Ddim

Ab/Eb Fm⁷ Bb¹³ Eb⁷ #9

couplet Ab7 *Guitare Blues*

Ab7 Bb⁹

Couplet Ab7 Db7b9 Db7 Db7

Ab7 Db7b9 Db7 Db7

Ab7 Db7b9 Db7

Ab7 Db7b9 Db7

Bb Bb7 Eb⁹ - Eb7b9

Bb Bb7 Eb⁹ - Eb7b9

Couplet Ab7 Db9

Ab7 Db9

Ab7 Db9

Ab7 Db9

Bb Bb7 Eb7 Eb7 Eb7 D7 Db7

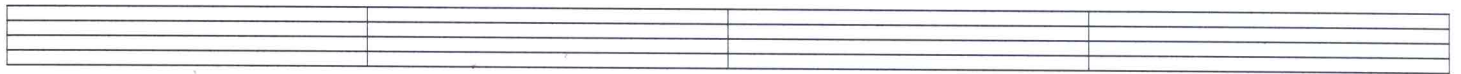
Bb Bb7 Eb7 Eb7 Eb7 D7 Db7

REF Cm7 Fm7 Cm7 Fm7

Cm7 Fm7 Cm7 Fm7

Db^a

Eb^a

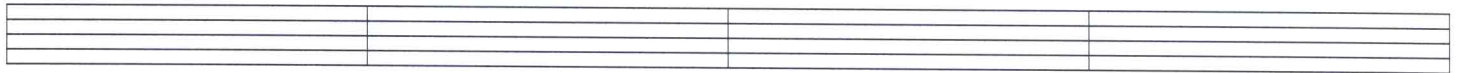


Cm7

Fm7

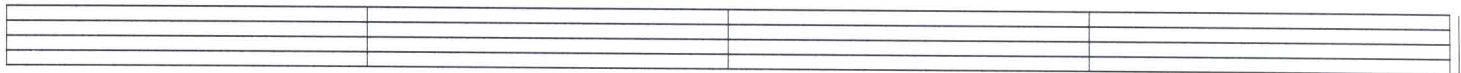
Cm7

Fm7



Db^a

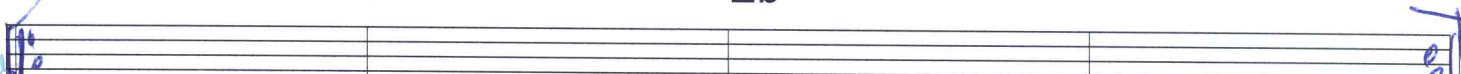
Eb^a



F

Eb^a

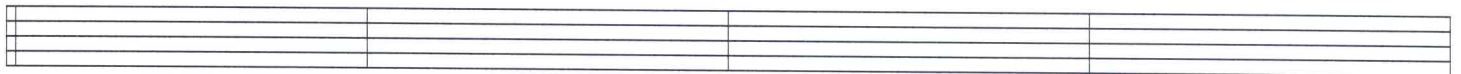
*Solo
mit
Chord*



Ab7

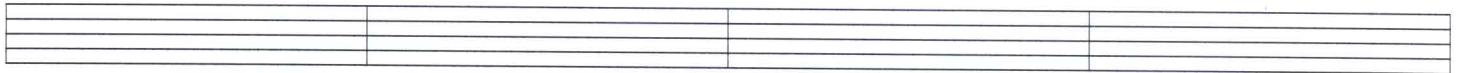
Db7

Capit



Ab7

Db7



Bb

Bb7

Eb7

Eb7 Eb7 D7 Db7



Cm7

Fm7

Cm7

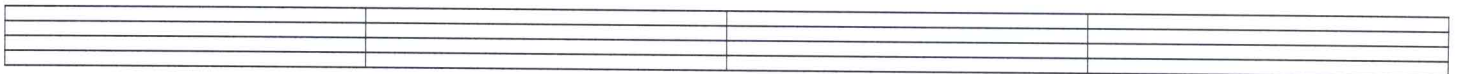
Fm7

REF



Db9

Eb9

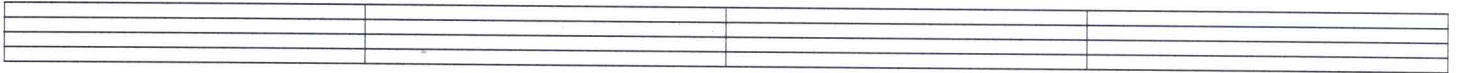


Cm7

Fm7

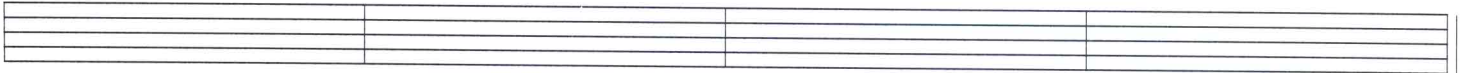
Cm7

Fm7



Db9

Eb9



*Solo
Guit*

Ab Db⁹ Bb⁹ Eb⁹

C F F F

Capt

Bb7 Eb7

Bb7 Eb7 Eb7 D7 Db7

C7 F7 F7 E7 Eb7

Ref

Dm7 Gm7 Dm7 Gm7

Eb9 F9

Ref

Dm7 Gm7 Dm7 Gm7

Eb9 F9

Dm7 Gm7 Dm7 Gm7

Eb9 F9