

Cap I

# quand on se donne

Gb

Ebm

F7sus F

Bb4

Bbm

Bass clef, 4/4 time signature. Empty staff.

Capit

Bbm

Ebm

F

Eb/G

Bb4

Bbm

Empty staff.

Bbm

Bb/D

Eb2

Ebm

F

Eb/G

Bb4

Bbm

Empty staff.

Bbm

Ebm

F

Eb/G

Bb4

Bbm

Empty staff.

Bbm

Bb/D

Eb2

Ebm

F

Eb/G

Bb4

Bbm

Empty staff.

Db

Ab/C

Ab

Db4

Db

Empty staff.

Gb

Cm7b5

F

Gm7

Bb4

Bbm

Empty staff.

Db

Ab/C

Ab

Bbm7

Db4

Db

Empty staff.

Abm7

Db7

Gbsus

Gb

Eb/G

Eb

Ab7sus

Ab7

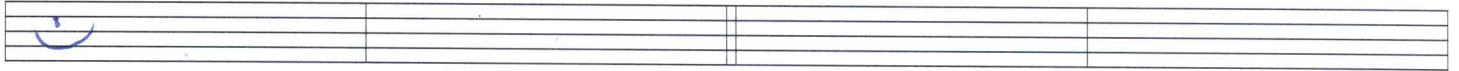
Empty staff with a blue smiley face at the end.

*couplet*

Ab7

Bbm

Ebm



F

Eb/G

Bb4

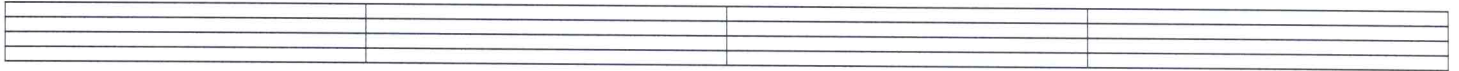
Bbm

Bbm

Bb/D

Eb2

Ebm



F

Eb/G

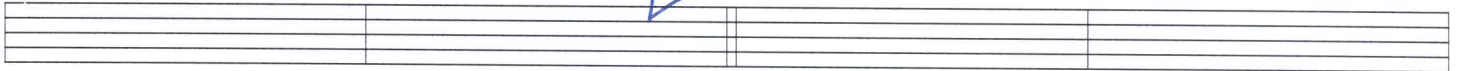
Bb4

Bbm

*REF*

Db

Ab/C



Ab

Bbm7

Db4

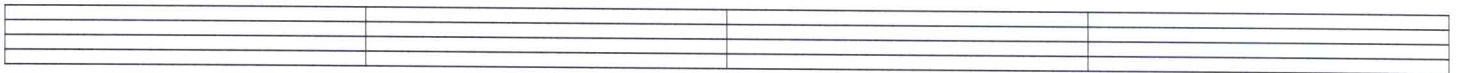
Db

Abm

Db7

Gb4

Gb



Eb/G

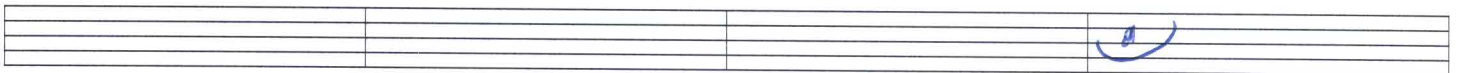
Eb

Ab7sus

Ab7

F/A

F#

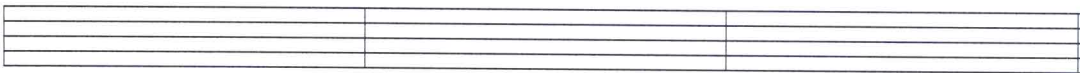
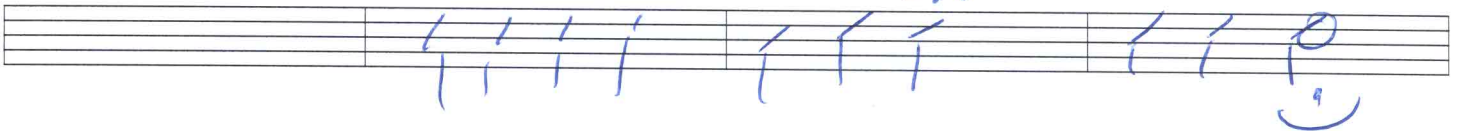


Db/Ab

Ab7

Db4

Db



**ÉCOLE DE GUITARE**  
CLAUDE SAINDON

apprendrelaguitare.ca  
(819) 474-6445